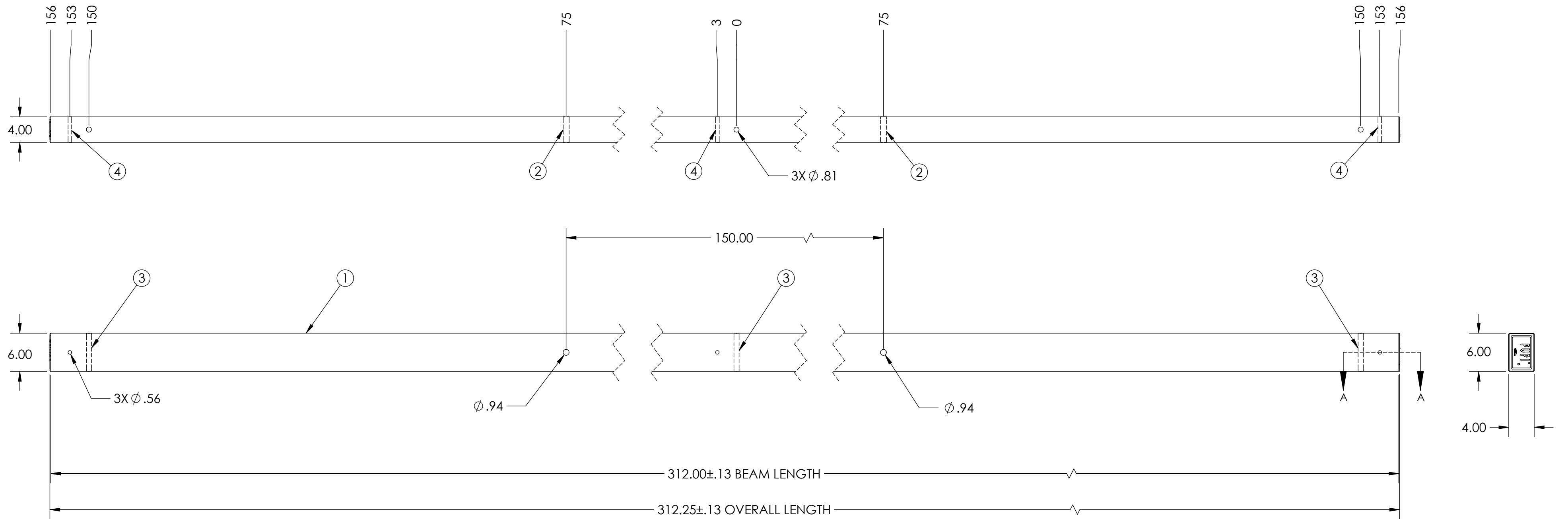
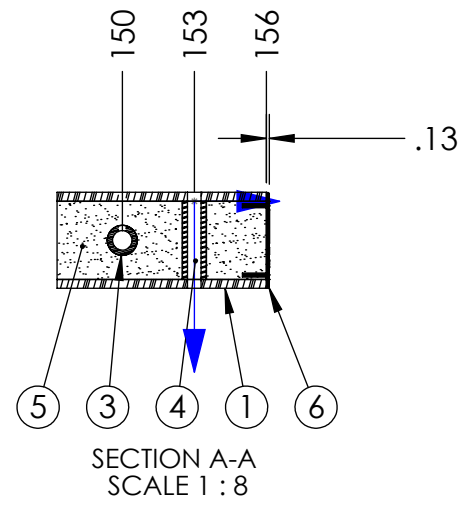


ITEM NO.	PART NUMBER	DESCRIPTION	DESCRIPTION 2	QTY
1	FB-312-4000-2	BEAM, PULTRUDED STOCK	SERIES 4000 x 312 in, GRAY	1
2	TG0938-0056	BUSHING	15/16 in x 3-1/4 in	2
3	TG0813-0053	BUSHING	13/16 in x 5-1/4 in	3
4	TG0563-0050	BUSHING	9/16 in x 3-1/4 in	3
5	FOAM	-	-	1
6	EC40-0006-2	END CAP	SERIES 4000, GRAY	2



REVISIONS			
REV.	DESCRIPTION	DATE	INITIALS



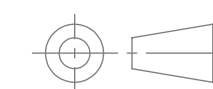
-----UNLESS OTHERWISE SPECIFIED-----
 DIMENSIONS ARE IN INCHES
 INTERPRET DIM AND TOL PER ASME Y14.5-2009
 ANGULAR: MACH ±2°
 BEND ±2°
 TWO PLACE DECIMAL ±0.02
 THREE PLACE DECIMAL ±0.005

PROPRIETARY AND CONFIDENTIAL
 THE INFORMATION CONTAINED IN THIS DRAWING IS
 THE SOLE PROPERTY OF GEOTEK. ANY
 REPRODUCTION IN PART OR AS A WHOLE WITHOUT
 THE WRITTEN PERMISSION OF GEOTEK IS PROHIBITED.

STATE:	RELEASED	2013-04-16
DRAWN:	RAF	2013-04-12
CHECKED:	CAS	2013-04-16
APPROVED:	CAS	2013-04-16

MATERIAL:
 FINISH:
 REPLACES:

THIRD ANGLE PROJECTION



1421 SECOND AVE NW
 STEWARTVILLE, MN 55976
 (800)-533-1680
 www.geotekinc.com

DESCRIPTION:
TANGENT ASSEMBLY, SERIES 4000
 312 in, RUS 55H

SIZE	DWG. NO.	REV
C	TX400031255H2	0.0
SCALE: 1:12	WEIGHT: 151.88 LBS	SHEET 1 OF 1