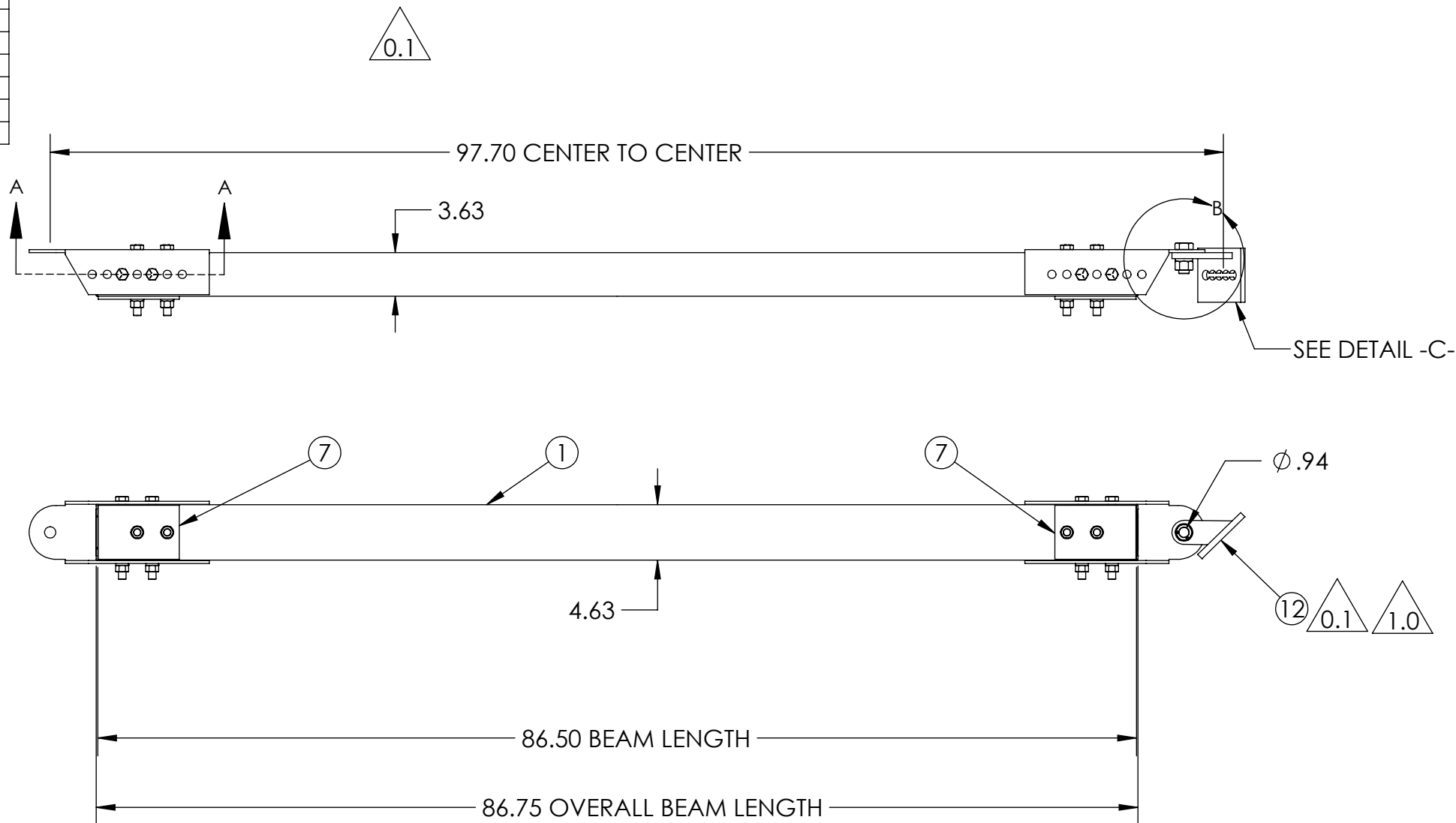
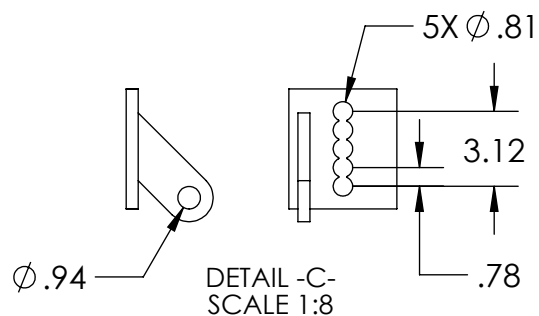
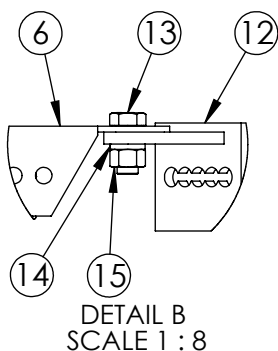
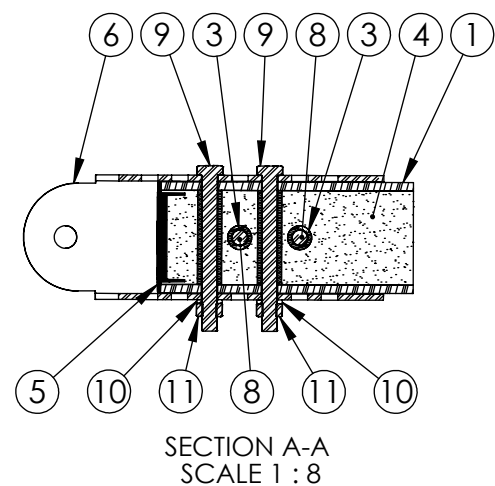


ITEM NO.	PART NUMBER	DESCRIPTION	DESCRIPTION 2	QTY
1	FB-086-5-3000-2	BEAM, PULTRUDED STOCK	SERIES 3000 x 86-1/2 in, GRAY	1
2	TG0688-0039	BUSHING	11/16 in x 3-15/16 in	4
3	TG0688-0040	BUSHING	11/16 in x 3 in	4
4	FOAM	-	-	1
5	EC30-0002-2	END CAP	SERIES 3000, GRAY	2
6	BK-0038	BRACKET, BRACE		2
7	PL-0033	PLATE, X-BRACE		2
8	HB0625-0018	HEX BOLT	5/8 in - 11 x 5-1/2 in	4
9	HB0625-0002	HEX BOLT	5/8 in - 11 x 6-1/2 in	4
10	LW0625-0004	LOCK WASHER	5/8 in	8
11	HN0625-0004	HEX NUT	5/8 in - 11	8
12	BK-0064	BRACKET ASSEMBLY, BRACE	HD, LEFT	1
13	HB0875-0013	HEX BOLT	7/8 in - 9 x 2 in	1
14	LW0875-0010	LOCK WASHER	7/8 in	1
15	HN0875-0006	HEX NUT	7/8 in - 9	1

**PUPI**<sup>®</sup>  
www.pupicrossarms.com

REVISIONS			
REV.	DESCRIPTION	DATE	INITIALS
0.1	REPLACE BK-0041 WITH BK-0067, BK-0041 HAS BECOME OBSOLETE. UPDATE DRAWING LAYOUT	2014-03-17	RAF
1.0	REPLACE BK-0067 WITH BK-0064, PREVIOUSLY WRONG ORIENTATION	2014-04-02	RAF



-----UNLESS OTHERWISE SPECIFIED-----  
DIMENSIONS ARE IN INCHES  
INTERPRET DIM AND TOL PER ASME Y14.5-2009  
ANGULAR: MACH ±2°  
BEND ±2°  
TWO PLACE DECIMAL ±0.02  
THREE PLACE DECIMAL ±0.005

**PROPRIETARY AND CONFIDENTIAL**  
THE INFORMATION CONTAINED IN THIS DRAWING IS THE SOLE PROPERTY OF GEOTEK. ANY REPRODUCTION IN PART OR AS A WHOLE WITHOUT THE WRITTEN PERMISSION OF GEOTEK IS PROHIBITED.

STATE:	RELEASED	2014-04-02
DRAWN:	RAF	2013-05-13
CHECKED:	ENG	2014-04-02
APPROVED:	ENG	2014-04-02
MATERIAL:		
FINISH:		
REPLACES:		

THIRD ANGLE PROJECTION

<p>1421 SECOND AVE NW STEWARTVILLE, MN 55976 (800) 533-1680 www.geotekinc.com</p>	DESCRIPTION: <b>VEE BRACE ASSEMBLY</b> SERIES 3000, 97.70 in	
	SIZE: DWG. NO. <b>B V0098DMSPX62</b>	REV: <b>1.0</b>
SCALE: 1:12 WEIGHT: 66.13 LBS		SHEET 1 OF 1